

HEMERA COLLECTION

windows and doors for luxury homes

HEMERA COLLECTION

A house isn't just somewhere you live. It's the place where you love, laugh and lounge. Your house is your home.

Enhancing your life

When you invest in new aluminium doors and windows, you want beautifully designed, expertly engineered products which enhance not just your home but the way you live in it.

Doors and windows from AluK's Hemera collection help you do exactly that - making the most of your view and flooding your home with natural light. Opening up your living space to the outdoors and bringing the outside in.

They offer the perfect combination of stylish, modern design and proven product performance. Not only do they look stunning, but decades of AluK technology have gone into ensuring that they will function fabulously for many years to come.

Of course, you can relax knowing that they have all been rigorously tested to keep out even the most extreme tropical weather as well.



ALL IN THE DETAIL

Design and aesthetics

When you invest in new aluminium doors and windows, you want stylishly designed, expertly engineered products which enhance not just your home but the way you live in it.

Within the inspiring AluK range, we'll help you make the perfect choice – from traditionally styled windows which beautifully balance form and function to contemporary sliding doors which open up your living space as never before.

They all feature slim sightlines so there's more glazing and less frame on show, and all enable you to flood your home with natural light. You don't need to feel limited by size or space either; our systems can carry large expanses of glazing to help you make the most of any view.

Performance

Choose quality windows and doors from AluK and you can relax knowing that they have been rigorously tested to keep out the very worst that the elements can throw at them. Our advanced engineering technology guarantees less noise, no dust and the ultimate protection from tropical wind and rain.

Of course, the whole range is highly thermally efficient as well, so your home stays warm, cosy and draught free while you save money on your energy bills.

And our decades of experience deliver outstanding product performance too, meaning that our windows and doors will stay looking good and operating smoothly and effortlessly for years to come, with only minimal maintenance needed.

Tried and Tested

Every door and window system in the AluK range is fully tested and accredited to the highest international standards for air/water/wind penetration and for security and durability.

Security

We know that what matters most to our customers is keeping their homes and families safe and secure. That's why we design all of our windows and doors with lots of smart security features as standard.

Colour

One of the biggest benefits of aluminium is that you can really make it your own. Select from a huge range of AluK colours and finishes to truly enhance your home, and even mix and match single and dual colour options to find the perfect combination.

All our windows and doors are finished to the highest international standards of course. When it comes to quality, there are simply no compromises.

Our name is on it

All of the gaskets, fittings and accessories used in the Hemera Collection are proudly branded AluK too – that's your guarantee of our quality.

Maintenance

All you need to do to keep your windows and doors looking their very best is wash them down a few times a year to get rid of any dirt or dust. That's all there is to it. They don't crack or fade in the sun and there's no scrubbing or painting required – leaving you more time to relax and enjoy your view.



Our Network

When you buy AluK aluminium windows and doors, you're buying from our network of trusted and experienced fabrication partners. These are independent, highly skilled businesses who we know live up to our exacting standards on quality and share our commitment to providing outstanding customer service.

They can give expert advice on exactly which products will be right for your home and support you every step of the way from initial enquiry right through to after sales service and warranty.

All our fabrication partners are fully trained and supported by AluK at every stage, meaning that our customers get the best of both worlds - all the design and manufacturing capacity of a big global group, and all the convenience, responsiveness and friendly support of a locally based company.

A Sustainable Choice

Aluminium is probably the ideal construction material for today's modern world. Inherently strong, durable and low maintenance; it is highly fire resistant and doesn't age or fade.

More importantly, it's a sustainable resource which can be recycled over and over again with absolutely no deterioration in the quality. In

fact, up to 90% of all the aluminium now used in construction has been recycled at least once, using just a tiny proportion of the energy which was required to make it in the first place.

AluK's window and door systems are designed to last for generations of course, but it's good to know that when they do eventually come to be replaced, the aluminium they contain can be recycled all over again.

About AluK

AluK is one of the world's leading designers and manufacturers of high quality aluminium window, door and curtain walling systems, with operations across Europe, the Middle East and Asia.

After 60 years, we are still a proud family-run business with a reputation built on the traditional values of quality, service and meticulous attention to detail.

We use expert local knowledge and a wealth of design and manufacturing experience to tailor our products and services to each of our markets. Our focus is always on building partnerships with our customers, and the success of that can be seen in some of the exceptional and iconic projects where our products have been installed.

THE RANGE



Range overview

	Sliding Windows and Doors pg 10	Lift & Slide Doors pg 12	Folding Doors pg 14	Openable Windows and Doors pg 16 - 18
System Features	Superior, high performing sliding solution with aesthetic and design appeal.	Robust, practical & functional. Designed for large openings.	Contemporary, stylish & performing. Suitable for larger glazing panels.	Robustness, modern aesthetic, high performance.
Cold Solution	•			•
Thermal Break Solution	•	•	•	•
Frame Depth	95 mm (Two Track), 143 mm (Three Track)	140/156 mm (Two Track), 213 mm (Three Track)	82 mm	45 mm, 56 mm
Interlock Visible Width	38 mm / 55 mm / 84 mm	50 mm / 110 mm	Not Applicable	Not Applicable
Maximum Sash Weight	200 Kg	400 Kg	150 Kg	130 Kg
Glazing Thickness	5 mm - 28 mm	10 mm - 50 mm	28 mm - 54 mm	5 mm - 40 mm
Dual Color Option	•	•	•	•
Lock	Flush (Automatic or Manual) or Cremone	Cremone	Cremone	Cremone
Lock with Key	•	•	•	•
Multipoint Lock	•	•	•	•
Hurricane Barrier	•	•	•	•
Flyscreen Option	Integrated	Independent	Independent	Independent
Handrailing Option	Integrated	Not Applicable	Not Applicable	Not Applicable

HEMERA

SLIDING WINDOWS & DOORS

– effortlessly smooth

Inspiring design

Our Hemera Sliding windows and doors feature super slim sightlines so there is always more glazing and less frame on show, and they come in two, three, four and six panel configurations to fit even the widest spaces.

Contemporary European design and engineering technology guarantee flawless operation, less noise, no dust, and the ultimate protection from wind and rain.

Make them your own

Hemera Sliding windows and doors are hugely versatile - giving you the freedom you want to create the ideal configuration for your home, while saving energy too. Our expert technical team can guide you through the process and give you all the inspiration you need to help you make the perfect choice.

- Select from cold or thermal break profiles and single or double glazing
- Choose anything from two to six panels in two or three tracks
- Decide whether you want them to slide from left to right – or both
- Select any fixed panels or flyscreens you need
- Add an integrated hand rail for openings merged with balconies
- For easy access and a seamless transition from inside to out, add a concealed threshold option



HEMERA

LIFT & SLIDE DOORS

– the sky's the limit

Effortless opening

It is the super smooth lift and slide mechanism in our stunning Hemera Lift and Slide windows and doors which makes them ideal for even bigger openings. You can choose full height floor to ceiling glazing more than 3m high with panels weighing up to 400kg each, and still open and close them effortlessly with one hand.

Performance and design

Like the entire Hemera range, the emphasis is on quality, durability and perfect performance. You get the same ultimate protection from dust, noise and tropical weather as you do from the Hemera Sliding windows and doors, and you can save even more energy.

Depending on which system you choose, frames can be as slim as 50mm around the outside and on the interlock, meaning there's very little frame on show to spoil your view.

Ultimate flexibility

Choose from two or three sliding tracks and up to six panels sliding to the right or the left to truly enhance your home. Low threshold options make them perfect for patios and balconies and you can add blinds, insect screens, and even a motorised opening option if you wish.



HEMERA

FOLDING DOORS

– contemporary living

Indoor/outdoor space

Expand your living space as never before with our stunning Hemera Folding Door. Enjoy a seamless transition from inside to out and create a perfect indoor/outdoor family living and entertaining space.

This European designed door is truly something special. Slim, symmetrical sightlines of just 97mm all the way around mean bigger expanses of glazing to let in more light, and flush fitting, pop up handles add to a contemporary, streamlined look.

Expertly engineered

Heavy duty compact stainless-steel rollers on the Hemera Folding Door help ensure that it opens and closes smoothly and effortlessly - time and time again, and our energy efficient design means you'll get the very best performance too.

The choice is yours

Doors can open in or open out to suit your home and garden and you can have up to seven folding panels to fit even the largest openings. You can even add fixed panels and single and double doors for the ultimate in flexibility.

Grey, white and black finishes are standard, which you can mix and match inside and out, but there are lots more colour options available as well to really inspire you. Our expert technical team are always happy to advise on what will work best.



HEMERA

OPENABLE WINDOWS & DOORS

COLD SOLUTION

– practical performance

Stylish and modern

Our Hemera Non Insulated high performance aluminium windows are an affordable and practical way to update your home. Because they measure 45mm from front to back, they let you replace outdated wooden or old PVC-U windows with a more modern and stylish alternative which fits those spaces perfectly.

Protection from the elements

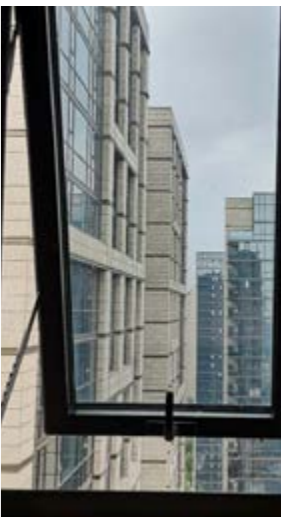
The Hemera Non Insulated windows keep out noise, dust and the very worst tropical weather and even boast their very own hurricane barrier for complete peace of mind.

Design flexibility

There are plenty of design options available too, so you can be sure we'll help you find the ideal window to enhance your home.

You can choose inward or outward opening, one, two or three sashes and even patio doors. You can opt for top, bottom or side hung casements, fixed lights or tilt and turn windows which are easy to clean from the inside.

We offer a wide range of anodised and powder coated finishes for this range and a broad spectrum of colours of course to appeal to every taste.



HEMERA

OPENABLE WINDOWS & DOORS

THERMAL BREAK SOLUTION

– versatile efficiency

Energy efficient performance

The 56mm Hemera Insulated windows are designed for all those applications where you want a robust and affordable window with an energy efficient thermal break as well.

Versatile design

Flexible and versatile, they give you the freedom to choose just the right style of energy saving window to suit your home perfectly. If you want a contemporary look, then the square profile is for you. If you're looking for something more traditional, then we offer a rounded profile too. Either way, you'll get slimline frames which make the most of the light and the view.

The range includes one, two or three sash casements – opening in or out, top and bottom hung windows, fanlight, pivot, and tilt and slide options. You can even have a 66mm sliding or patio door to match.

There are anodised and powder coated finishes available in a broad range of single and dual colour options and even special order high-performance finishes for polluted or coastal environments.

Protection from the elements

Both the Hemera Insulated and the Hemera Non-Insulated windows are guaranteed to keep out noise, dust and the very worst tropical weather.





GET IN TOUCH

Feel free to get in touch with our trusted partner in your area to discuss the plans for your dream home.

Please contact our authorized fabricator:

Window World India

Plot No. 13, MK Technology Park, Landran Banur Road,
NH-205, Greater Mohali-140306

